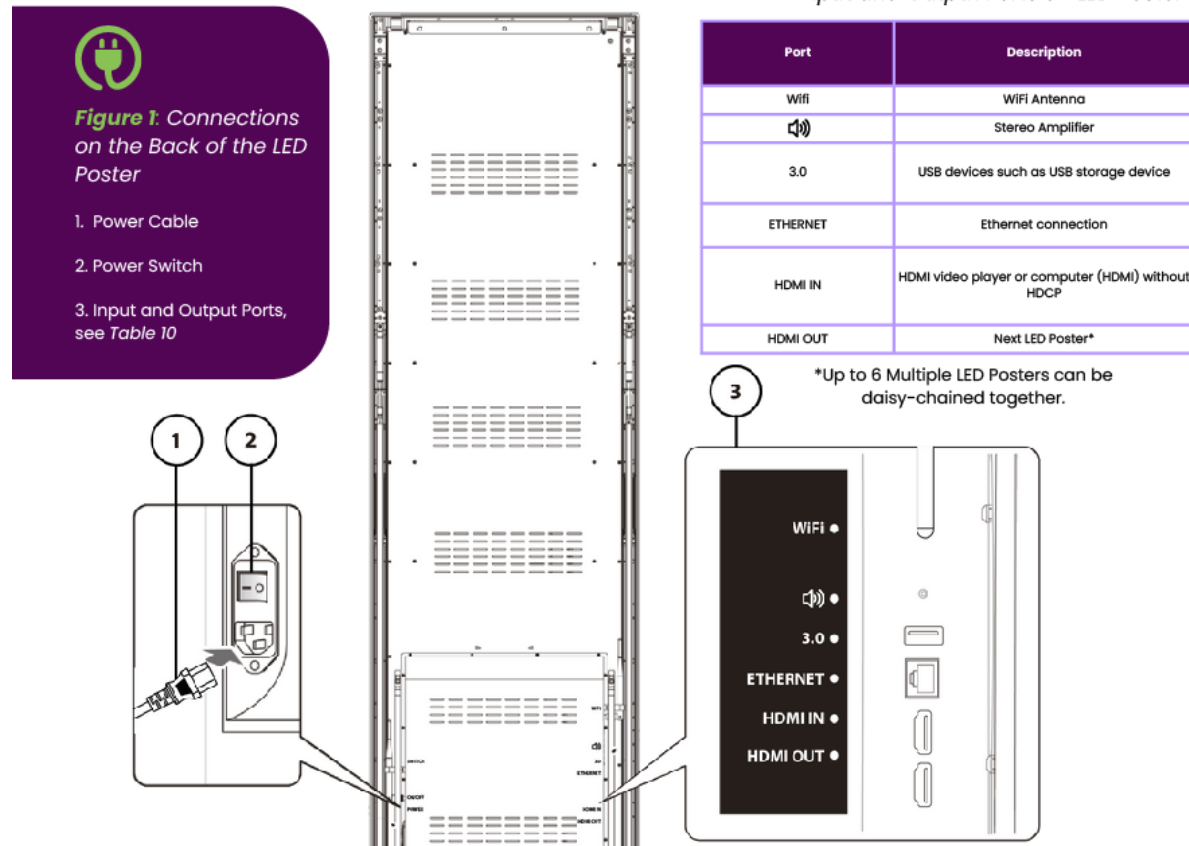




# Connecting Multiple VTI LED Posters

## Connecting Hardware

Below familiarize yourself with your LED Poster's basic input and output ports.

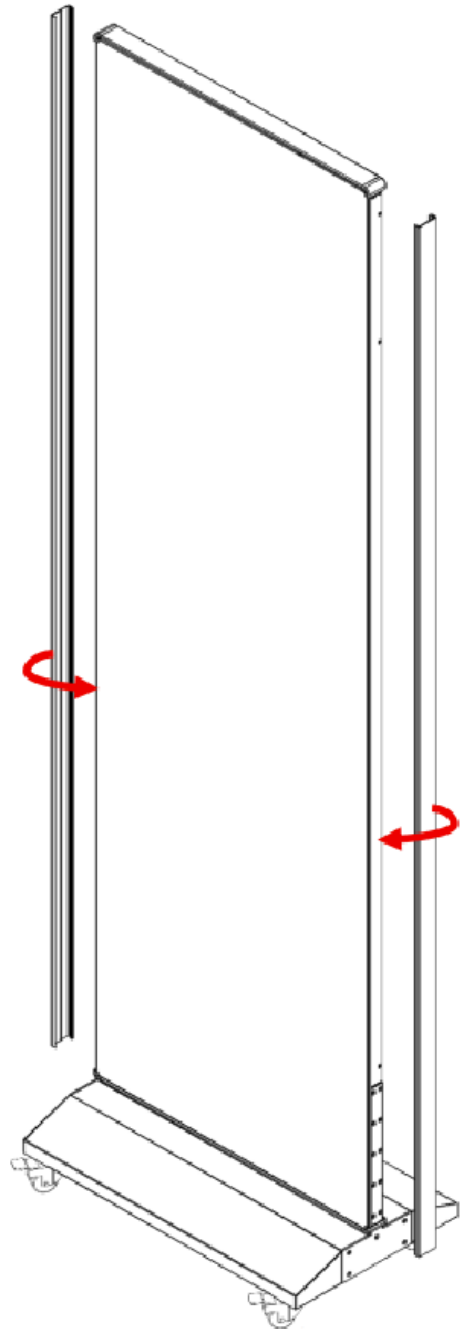
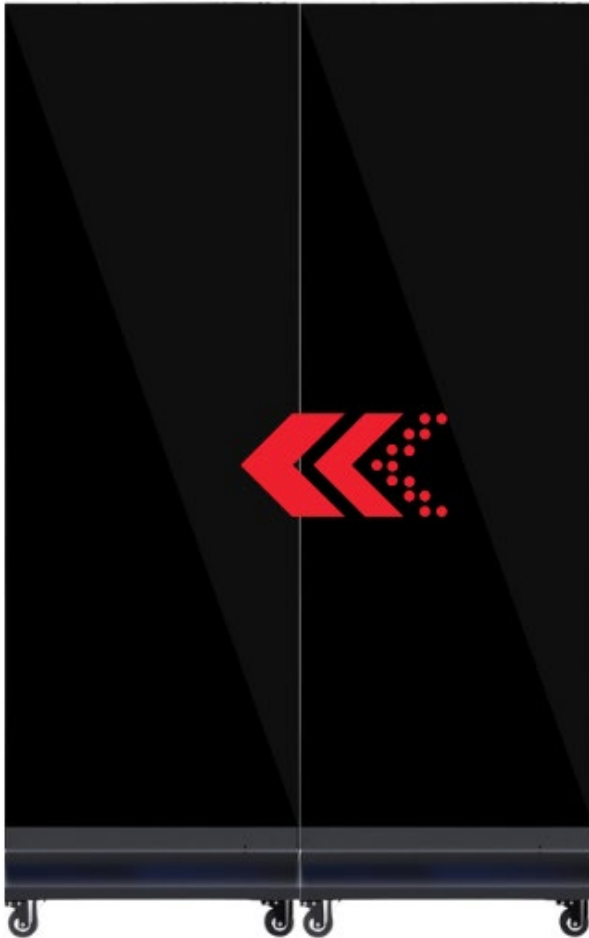




## Seamless Video Wall Hardware Setup

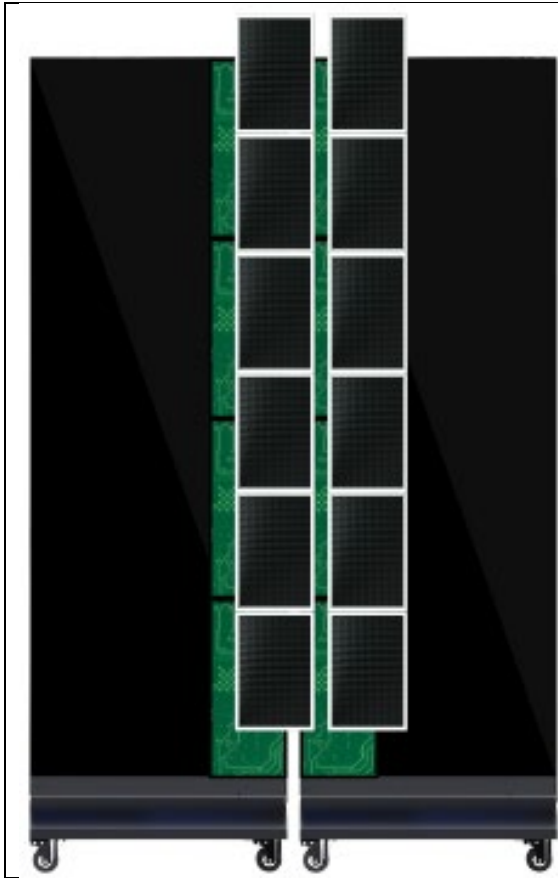
To fit LED Posters together for a **seamless Video Wall** you only need to:

1. Remove the sidebars (see right) between two posters.
2. Station LED Posters next to each other (see below).

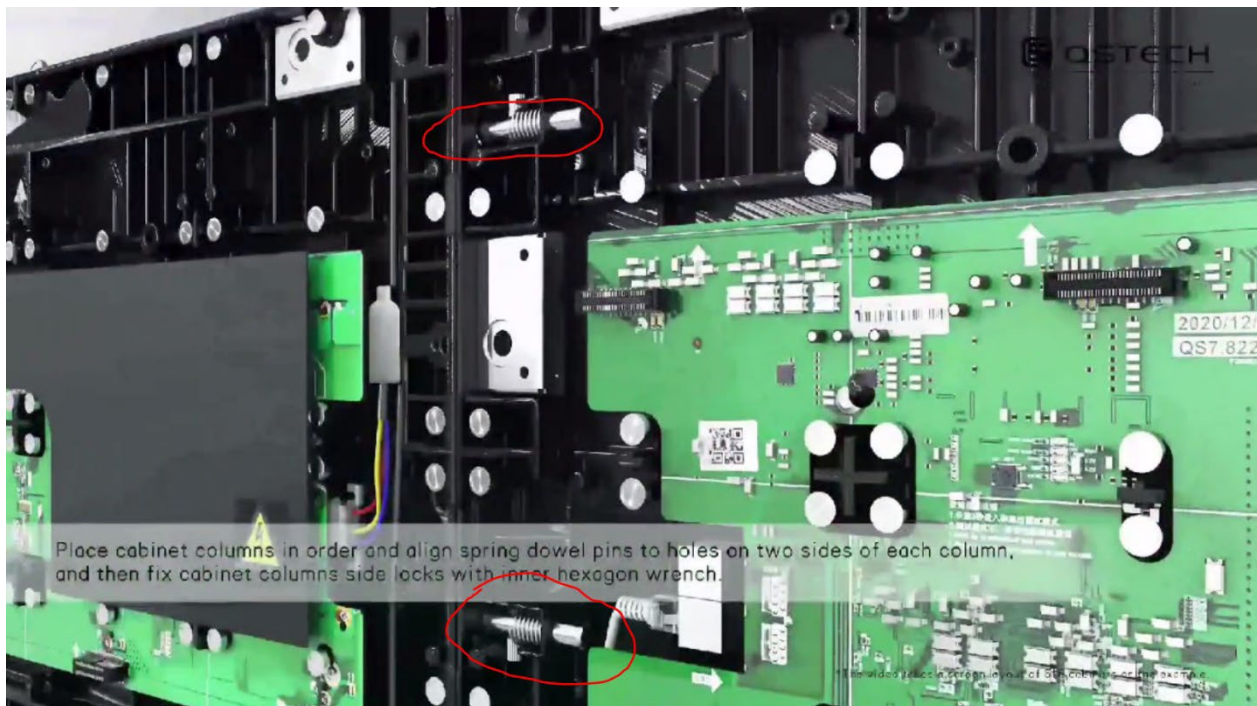




3. Using your suction cup tool - Remove the LED modules between two posters, which cover the \*sidelock of the Poster cabinet



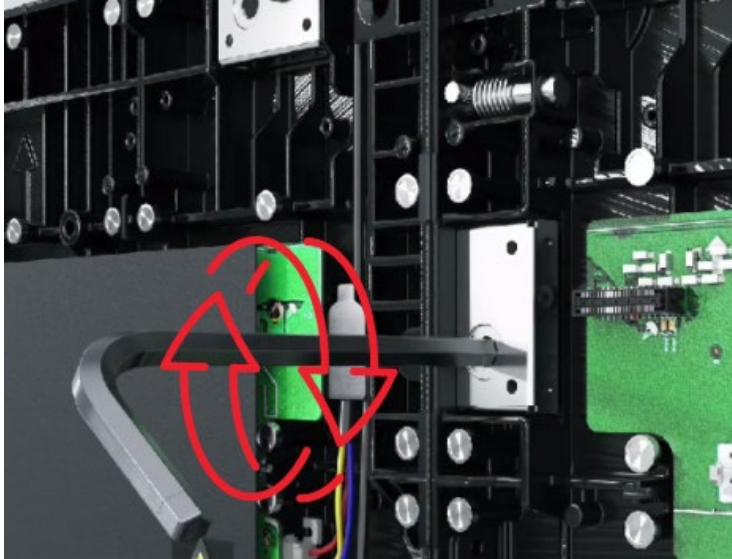
**Use magnet included in LED Poster kit.**





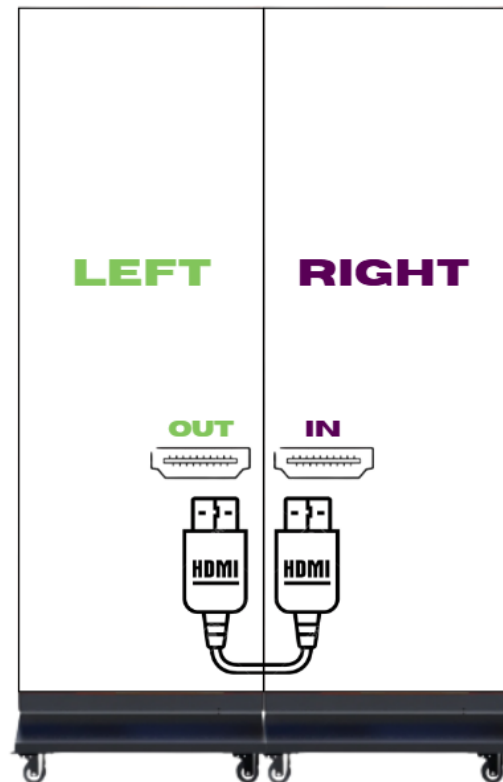
\*Side locks (pictured below)

4. Wrench the side lock and screws as shown in the attached video.



## FRONT VIEW

5. To connect two or more LED Posters, you simply need to connect the “HDMI OUT” of the Primary Poster (Left) to the “HDMI IN” of the Secondary Poster (Right).

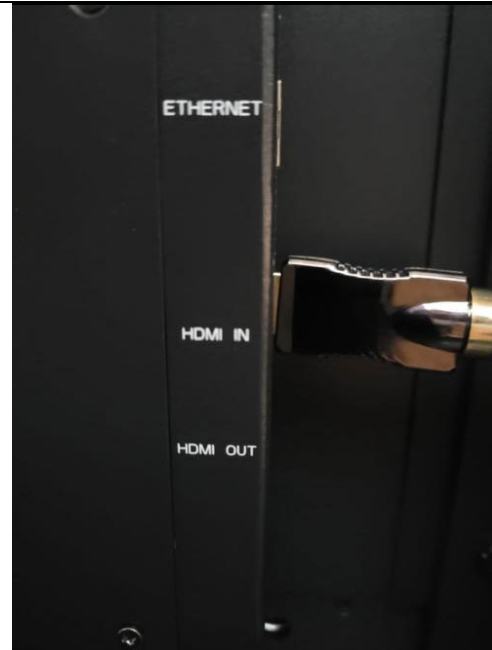




Primary (Left): HDMI OUT

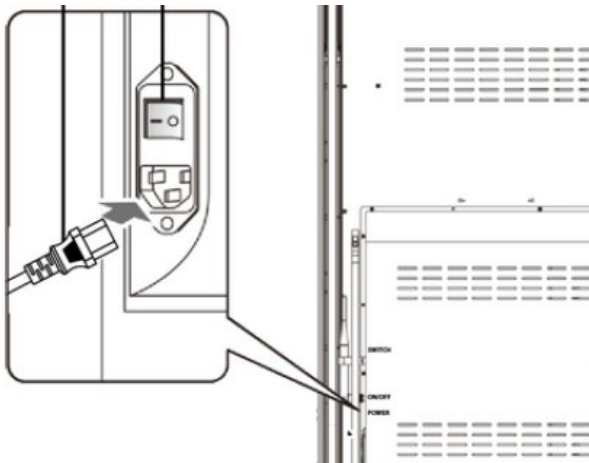


Secondary (Right): HDMI IN

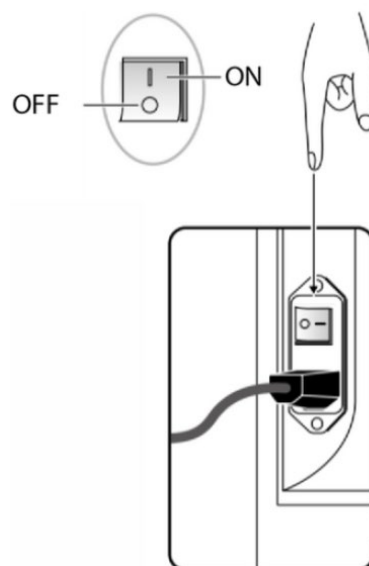


## 6. Power Up All LED Posters

- Plug in LED Posters on back left side of all devices.



- Press the power switch to “On.” Give Screen about 10 seconds to power on.



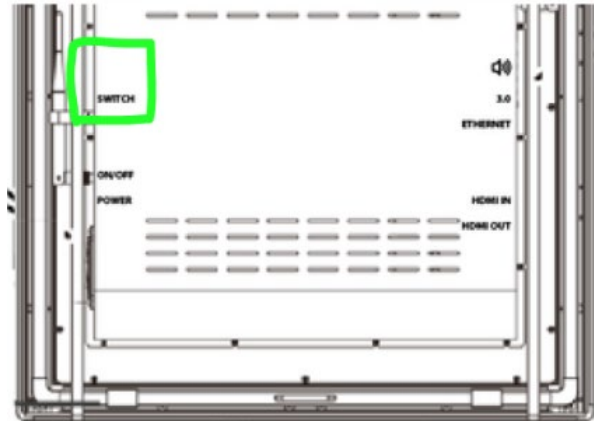


## 7. Configure Inputs

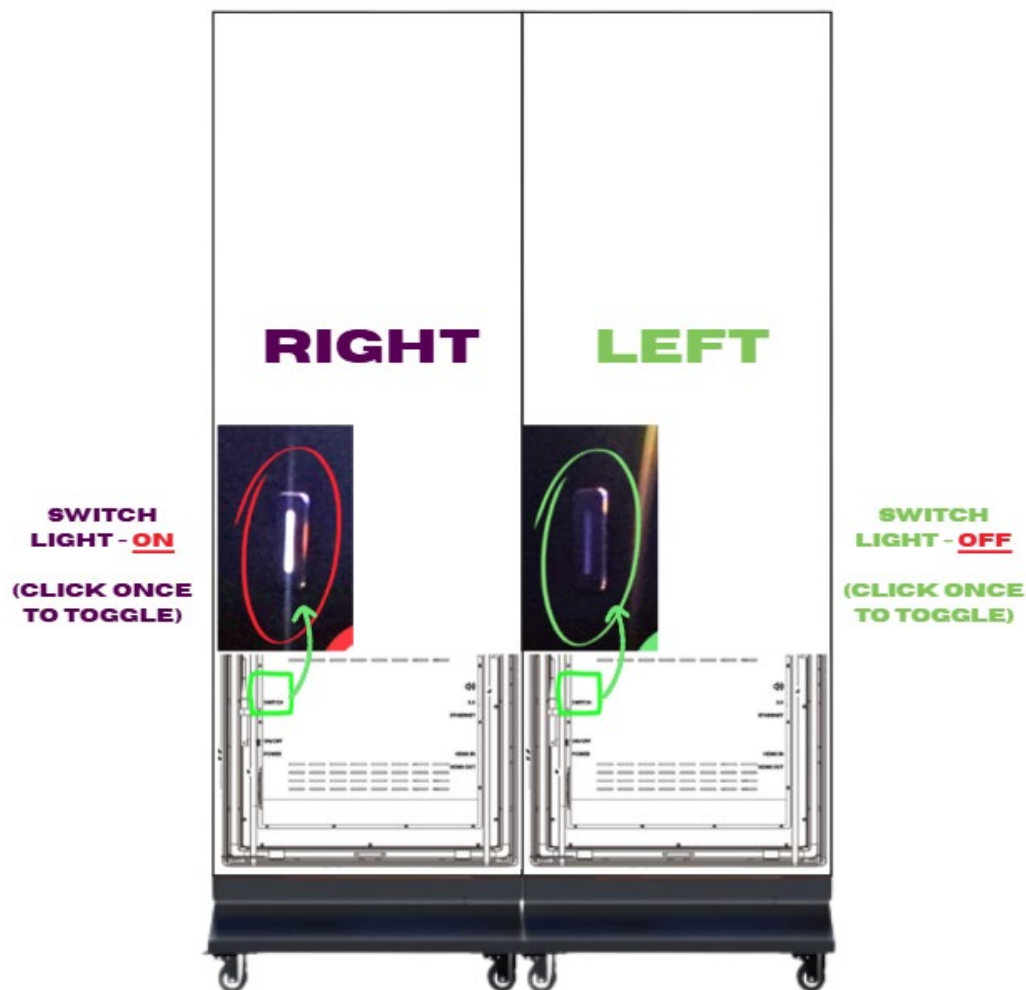
- **On back, left-hand side of device,** locate your gray “Switch Button” above the power switch.

Toggle **light off** on the **Primary Screen** (in the case the left screen). *\*Simply press once button once to toggle on/off*

Toggle **light on** on the **Secondary Screen** (in this case the right screen) see below - *\*Screen orientation has been flipped because this is the BACK VIEW.*



## BACK VIEW







## Downloading Custom Content for LED Poster

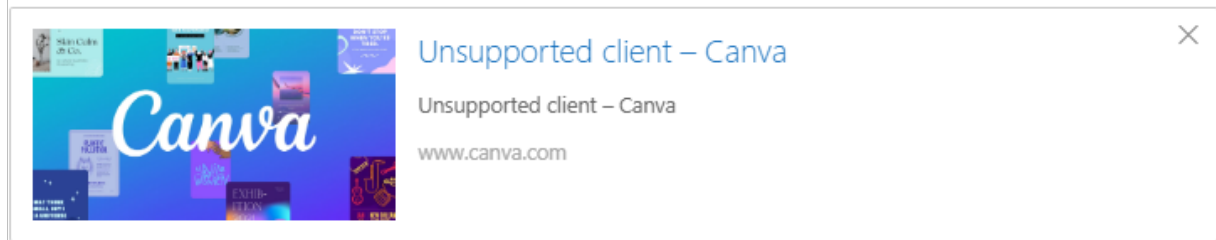
- **Download Video File** to your computer – This was sent in an email from DSI

### Video File:

[Taos Schools - LED Poster \(Dual Screens\) - \[Client Copy\].mp4](#)

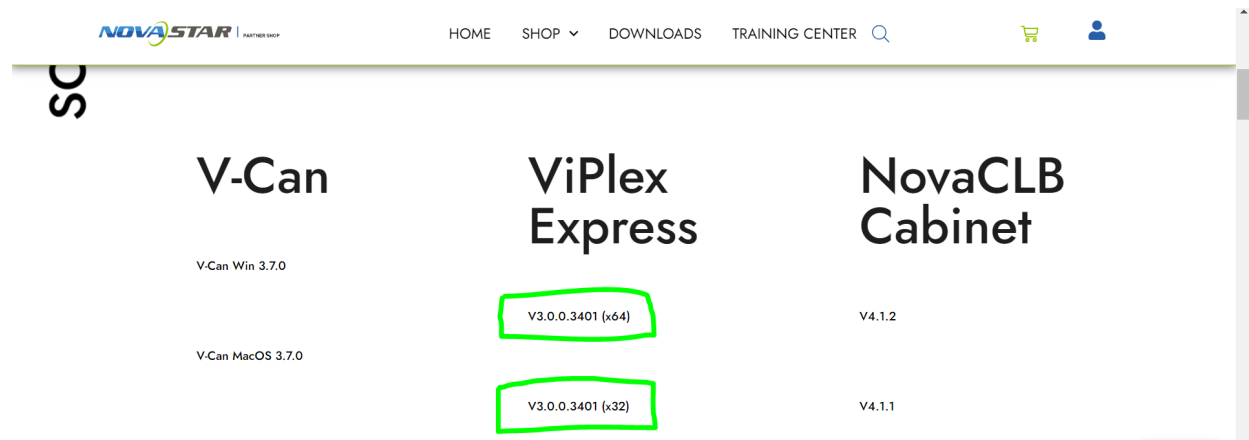
### Canva File:

[https://www.canva.com/design/DAGuw\\_kq6e0/D9IVdPQXNaHILbRttg4vng/edit?](https://www.canva.com/design/DAGuw_kq6e0/D9IVdPQXNaHILbRttg4vng/edit?)

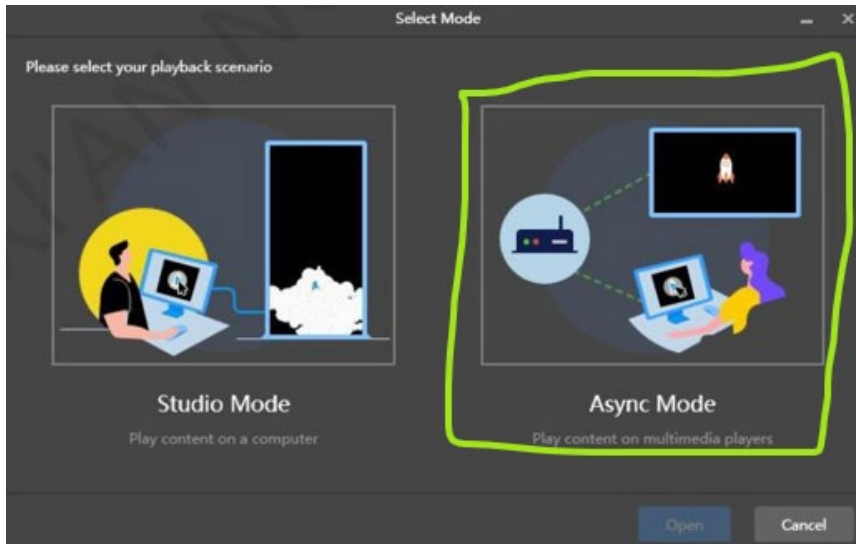


## Content Management Software: Download - Viplex Express

- Open Web Browser and visit: <https://novastar.shop/en/downloads/>
- Download latest **ViPlex Express** Application based compatible with your operating system.



- Run .EXE installer then open the ViPlex Express application
- After ViPlex Express is first installed, a **Select Mode** dialog box appears when you open ViPlex Express.
- Select **Async Mode** and click **Open**.

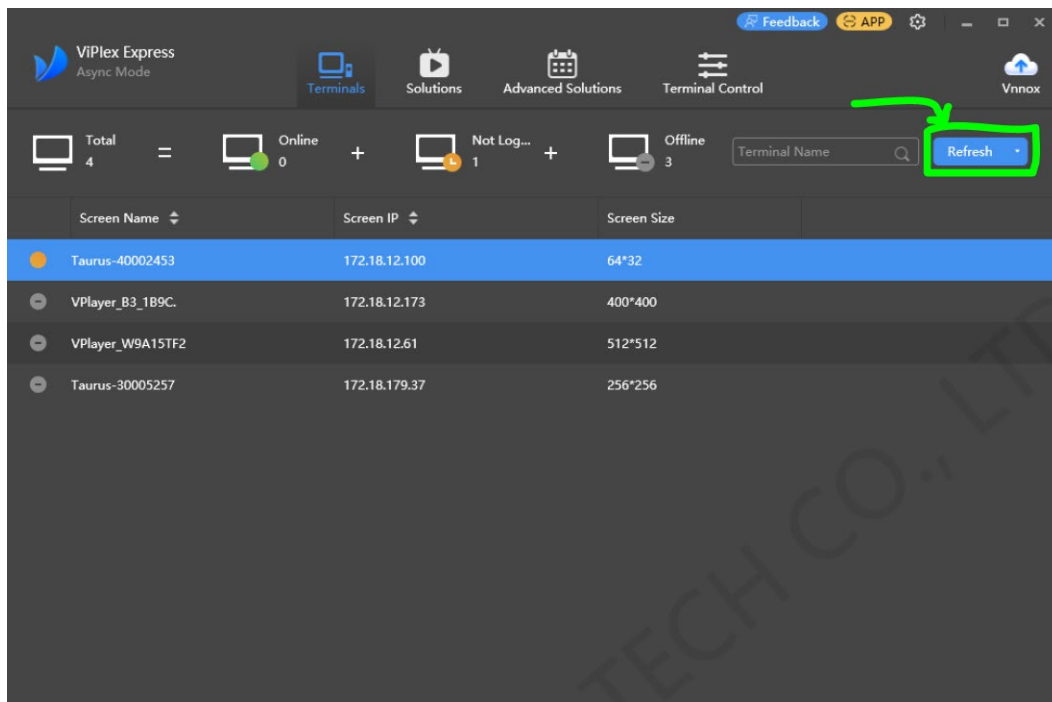


## Connect to LED Posters

- Refer to “[Connecting LED Poster to Network.pdf](#)” document provided by DSI.

## Logging Into “Terminals”(LED Posters)

- Step 1:** Click **Refresh** to refresh the screen list.







After detecting a terminal, ViPlex Express will try to log in to the terminal with the default account or the account used for the last login.

If terminals and ViPlex Express are not on the same network segment and their network segments can be pinged.

Click next to Refresh, select Specify IP and enter an IP address or IP range to connect to terminals manually.

● : Denotes that the terminal is online and you can log in to it. Go to Step 2.

● : Denotes the terminal is offline and you cannot log in to it.

● : Denotes you have successfully logged into the terminal.

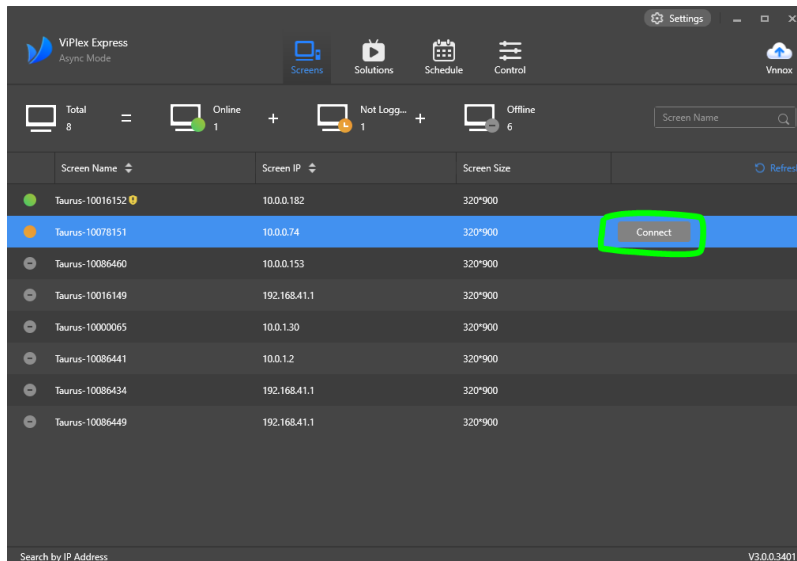
- **Step 2:** Match the device “Taurus” number to the number on the back of your Primary Device (Left)



ViPlex Express Async Mode		Screens		Solutions	Schedule	Control	Vnnox
Total 31	=	Online 0	+	Not Logg... 2	+	Offline 29	Screen Name <input type="text"/>
Screen Name	Screen IP	Screen Size	Refresh				
● Taurus-10016152	10.0.0.87	320*900					
● Taurus-10078151	10.0.0.152	320*900					
● Taurus-10086460	10.0.0.153	320*900					
● Taurus-10016149	192.168.41.1	320*900					

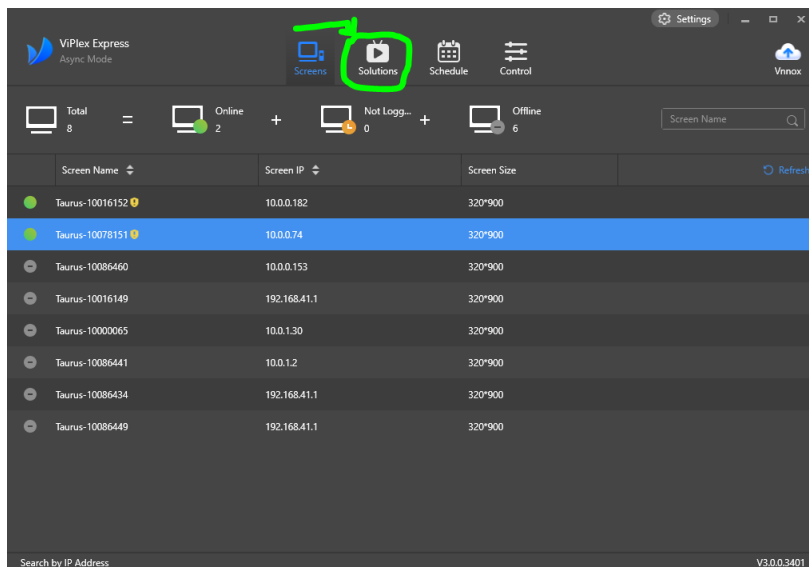


- **Step 3:** Click **Connect** to the right of the Primary screen's information.



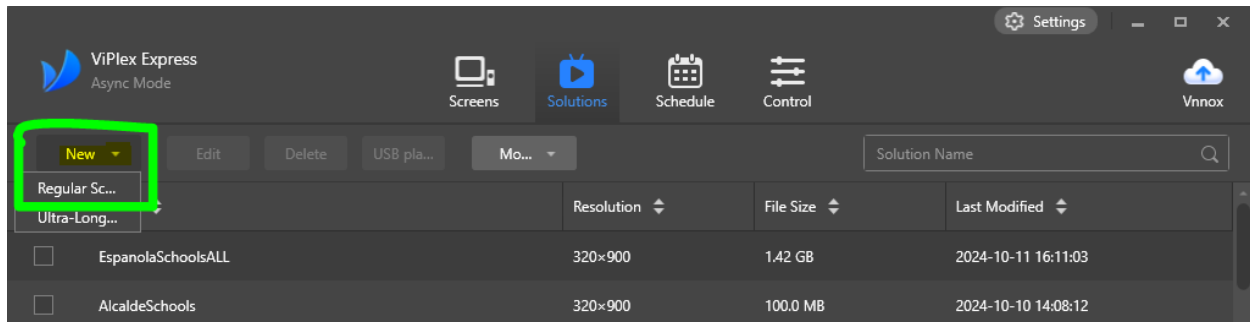
## Uploading Content to LED Poster

- **Step 1:** Choose **Solutions** to access the solution management page





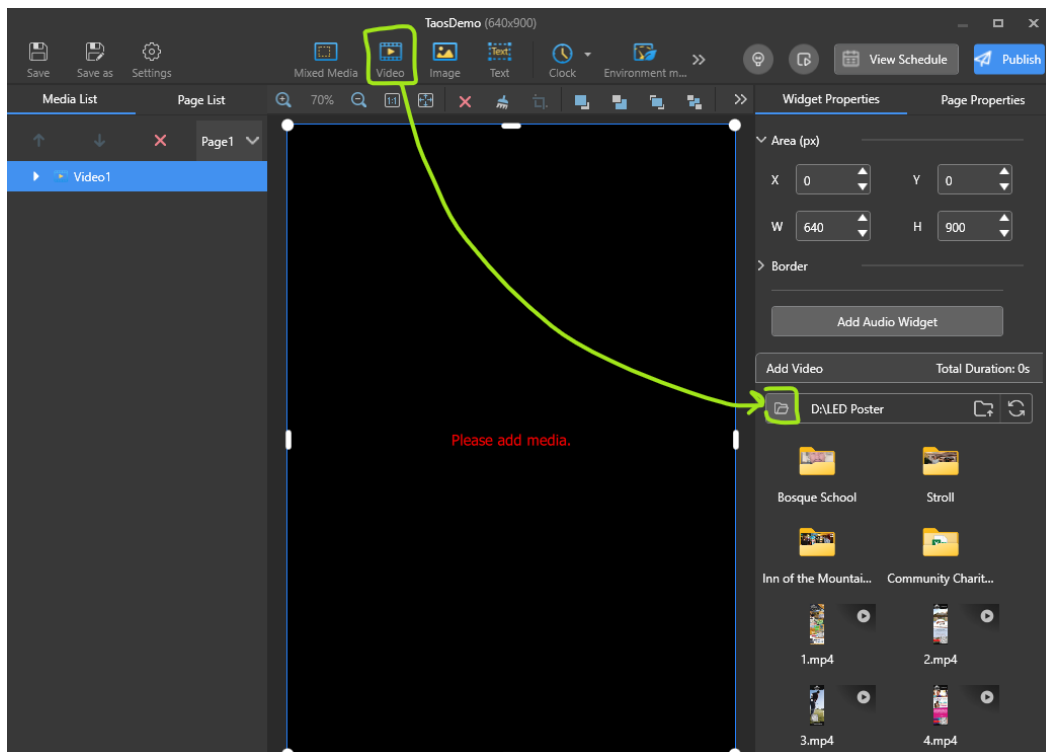
- **Step 2:** Click **New** and select **Regular Screen** from the drop-down menu. The Solution Information dialog box appears.

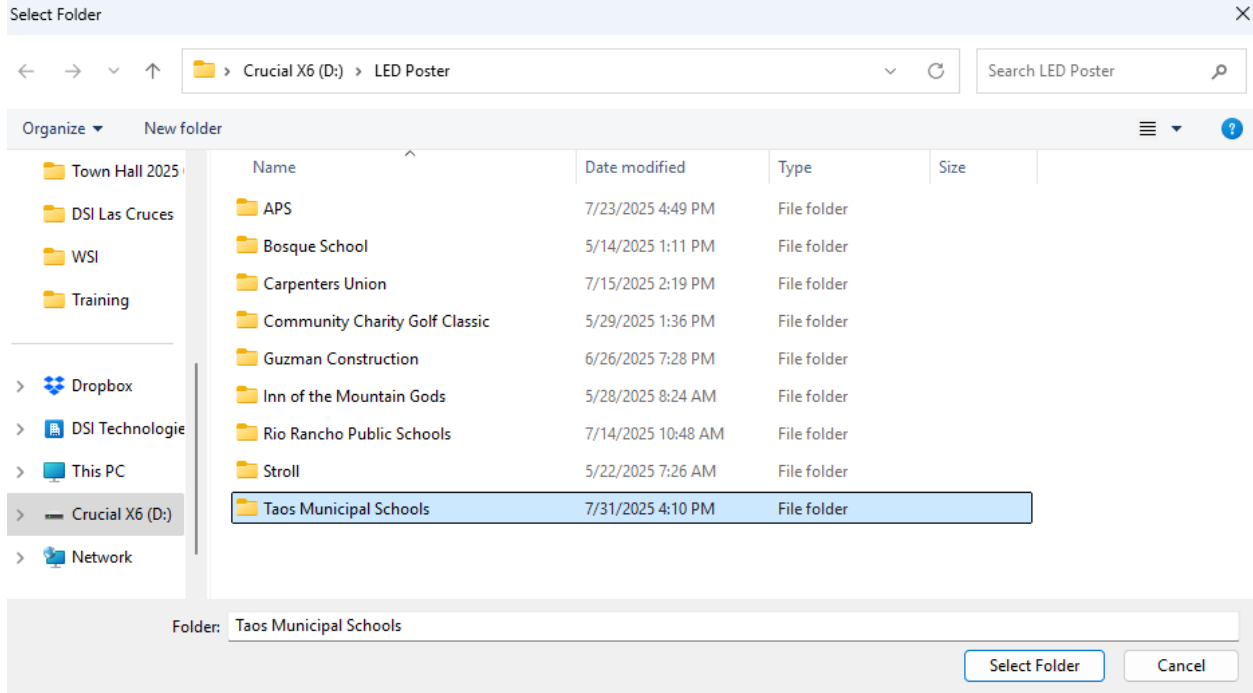


- **Step 3:** Set a name, and set your resolution to:
  - 2 Poster Video Wall: **640 x 900px**
  - 3 Poster Video Wall: **960 x 900px**
  - 4 Poster Video Wall: **1280 x 900px**
  - 5 Poster Video Wall: **1600 x 900px** (for perfect 1920 x 1080 resolution)
  - 6 Poster Video Wall: **1920 x 900px**

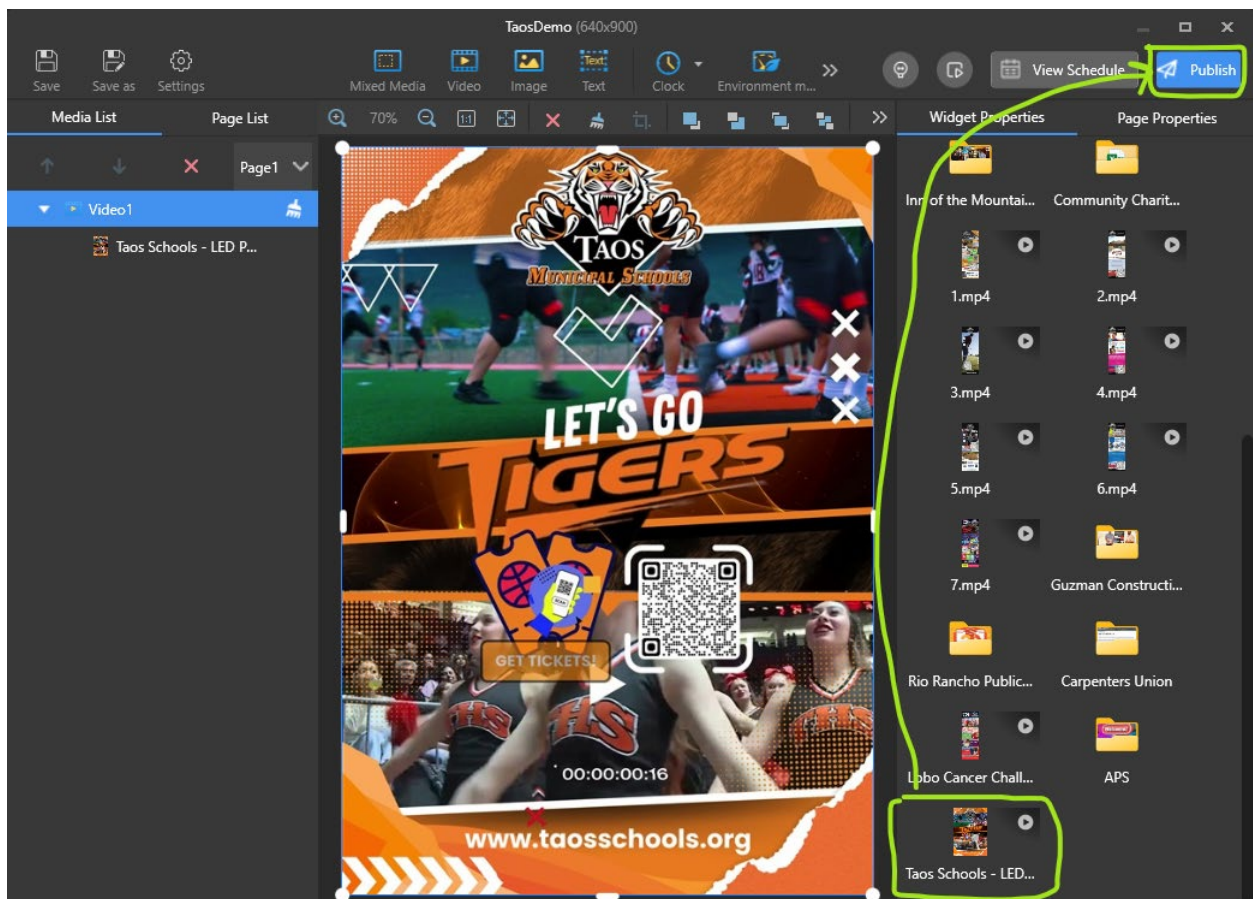
then click **OK** to access the solution editing page.

- **Step 4:** Once the Solution Editing Window pops-up, Click the **Video** button to insert a video, or **Image** to insert an image. In order to select a video, click the **Folder icon** to browse your file.



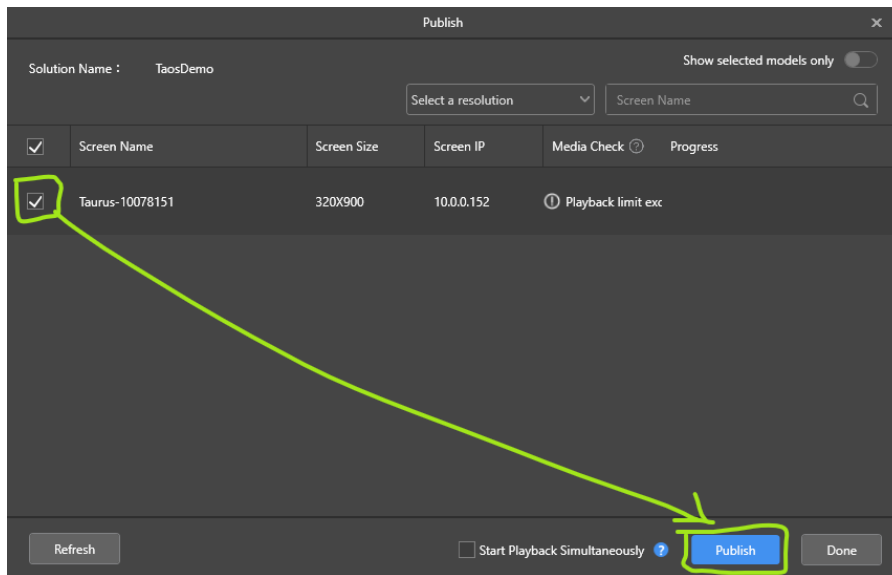


- **Step 5: Select video and click Publish**





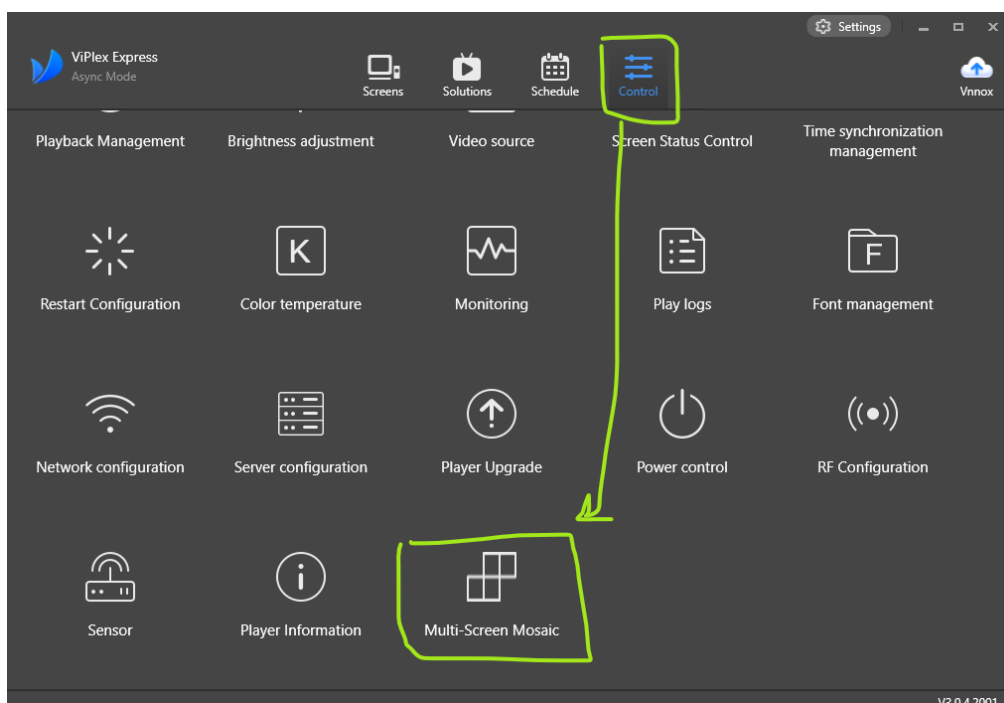
**Step 6:** In **Publish** pop-up window **select devices** and click **Publish**



## Multi-Screen Mosaic

Your content will be displayed twice, once on each screen. Don't fret! In 2 easy steps update your content to display as a single seamless image across your screens!

- **Step 1:** Click on the **Control** button on the navigation Bar then scroll down and click on **Multi-Screen Mosaic**





- **Step 2:** Set the following parameters then click **Apply**
  - Select your Primary screen again.
  - Toggle **on** Multi-Screen Mosaic
  - Mosaic Orientation: **From Left**
  - Mosaic by: **Quantity**
  - Screens for Mosaic: **Input your number of screens (in this case “2”)**

Multi-Screen Mosaic

Screen Name

Screen Name	Screen IP
✓ Taurus-10078151	10.0.0.152

Current screen: Taurus-10078151

Information Obtained On:

Player Time: 7/31/2025 4:38:58 PM

Local Time: 7/31/2025 4:38:58 PM

Parameter Configuration

1. Only horizontal mosaic of screens with the same resolution is supported.  
2. Screens must be connected in order via HDMI. You only need to configure the starting screen and publish a solution to this screen.

Multi-Screen Mosaic ☒

The loading capacity supported by the player is up to 4096 px. According to your screen resolution, the number of players that can be used for mosaic is up to

Mosaic Orientation ☒ From Left ☐ From Right

Mosaic By ☒ Quantity ☐ Width

Screens for Mosaic: 2

Apply

**VOILA!**

