



CONNECTING TO YOUR LED POSTER

Guidebook

*Step by step guide to connecting your
desktop computer to your LED Poster*



TABLE OF CONTENTS

Getting Started

01

1.1 Wiring the LED Poster

03

1.2 Switching on/Switching off the LED Poster

04

Software Download

02

2.1 Getting and Installing Content Management Software

05

2.2 Required Information

05

2.3 Installing ViPlex Handy (Android/iOS)

06

2.4 Installing ViPlex Express

06

Connecting LED Poster

03

3.1 Connecting via Local Area Network (Ethernet)

07

3.2 Connecting via Wireless LAN (WiFi)

09

3.3 Connecting to LED Poster via Poster Hotspot (WiFi AP)

12

Creating Solutions

04

4.1 Creating a Regular-Screen Solution

13

Additional Support

05

Place support ticket, access support resources and more

17

01 GETTING STARTED



1.1 Wiring the LED Poster



Figure 1: Connections on the Back of the LED Poster

1. Power Cable
2. Power Switch
3. Input and Output Ports, see Table 10

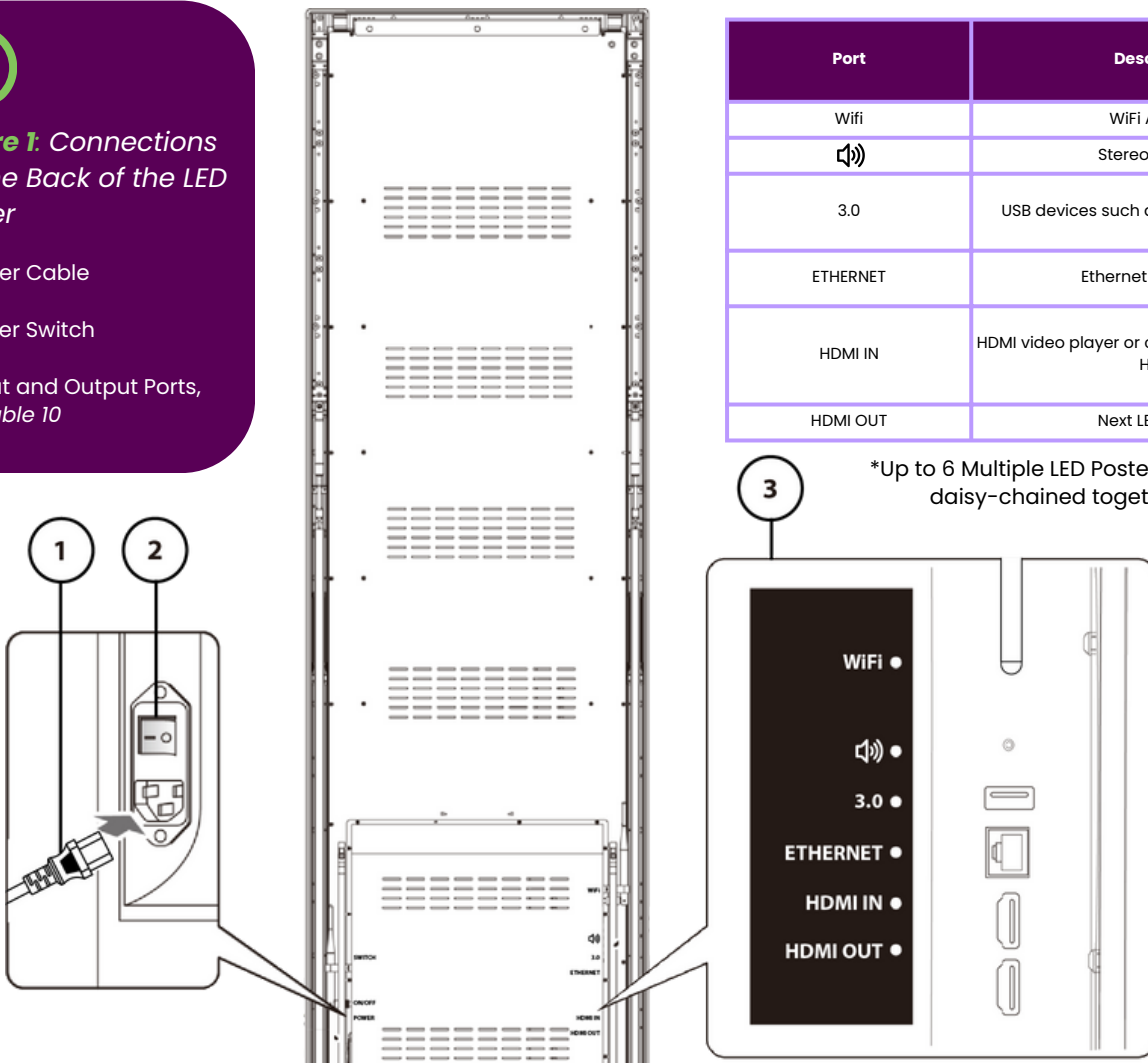


Table 10: Input and Output Ports on LED Poster

Port	Description
Wifi	WiFi Antenna
	Stereo Amplifier
3.0	USB devices such as USB storage device
ETHERNET	Ethernet connection
HDMI IN	HDMI video player or computer (HDMI) without HDCP
HDMI OUT	Next LED Poster*

*Up to 6 Multiple LED Posters can be daisy-chained together.

Prerequisites

- Prepare the required cables.
 - Which cables are needed, depends on the localization, installation variant and the connection variant with the software.

How to do it

Step 1) Connect the Power cable to the LED Poster and to Power Source.

Step 2) Connect the HDMI cable with the Input port.

Step 3) Connect the USB devices.

Step 4) If needed, connect the AUDIO port.



1.2 Switching on/Switching off the LED Poster

Prerequisites

- The LED Poster is correctly wired.
- The LED poster is located in an environment where the permissible temperature and ventilation conditions are given.

How to do it

Step 1) Press the power switch down. See *Figure 2*

Result: The LED poster is connected to the power grid.

Step 2) Give LED Poster a few brief moments to power on.

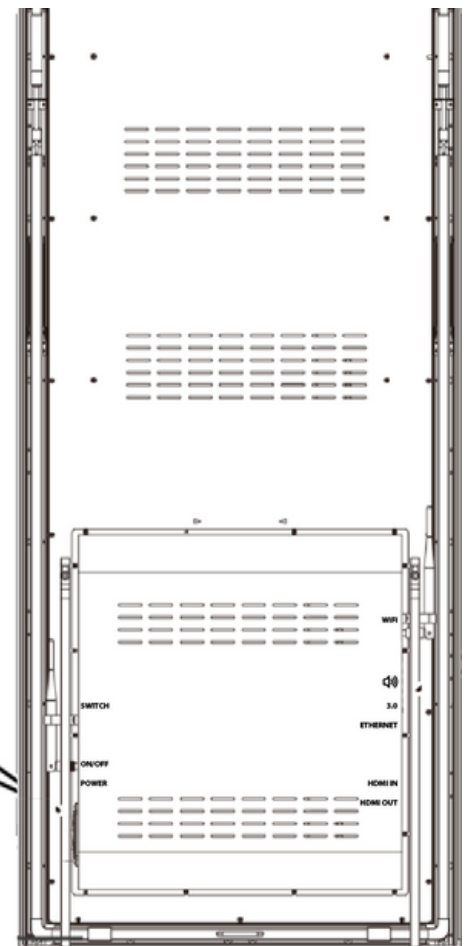
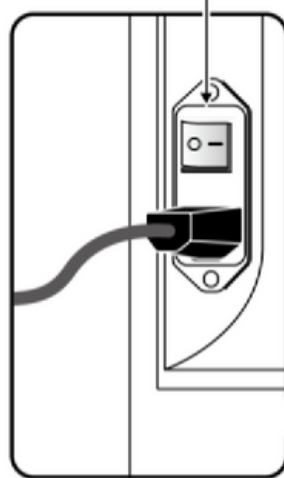
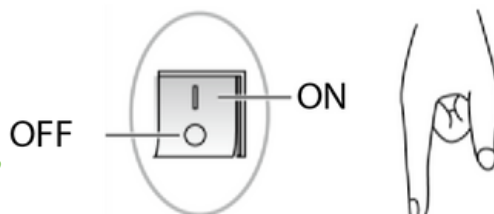


Figure 2: Check to make sure Power cable is securely connected to LED Poster and press Power Switch down.

02 SOFTWARE DOWNLOAD

2.1 Getting and Installing Content Management Software

ViPlex Handy is a software for managing screens via LAN. The software can be used for the management of the LED Poster players.

ViPlex Express is a LAN-based screen management software. ViPlex Express is used as the client software on PC for the LED Poster multimedia players. This software automatically finds and connects to terminals in the same local area network (LAN). Use ViPlex Express to configure screens, publish solutions and control solution playing. The current versions are only available for Windows PC.

Download the current version at: <https://novastar.shop/en/downloads/>

2.2 Required Information

Table 11: Related Software Versions


Name	Type	Description	Address	More Information
ViPlex Handy	Mobile client	LAN-based screen management software for Android and iOS, which is mainly used for screen management, solution editing and publishing.		
ViPlex Express	PC client	LAN-based screen management software for Windows, which is mainly used for screen management, solution editing and publishing.	https://novastar.shop/en/downloads/	Latest Version: V2.23.0.1001

Table 12: Account Information for LED Poster


Item	Account Name	Default Password
Connect LED Poster Wireless LAN AP	"AP"+ the last 8 digits of the SN For example: AP10000033	SN2008@+
Log in LED Poster	admin	SN2008@+

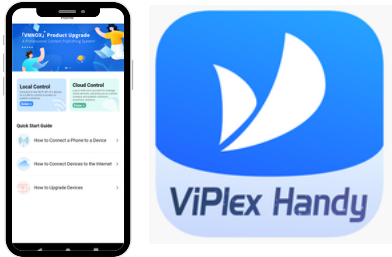
2.3 Installing ViPlex Handy

How to do it

Step 1) Download the installation file for ViPlex Handy:

Table 13: ViPlex Handy Download Links

Operating System	Link	QR Code
Android	https://play.google.com/store/apps/details?id=nova.priv.hand.easypluto.google	
iOS	https://apps.apple.com/us/app/viplexhandy/id1241302188	



Step 2) Install the app on the mobile device. Follow the installation instructions.

2.4 Installing ViPlex Express

How to do it

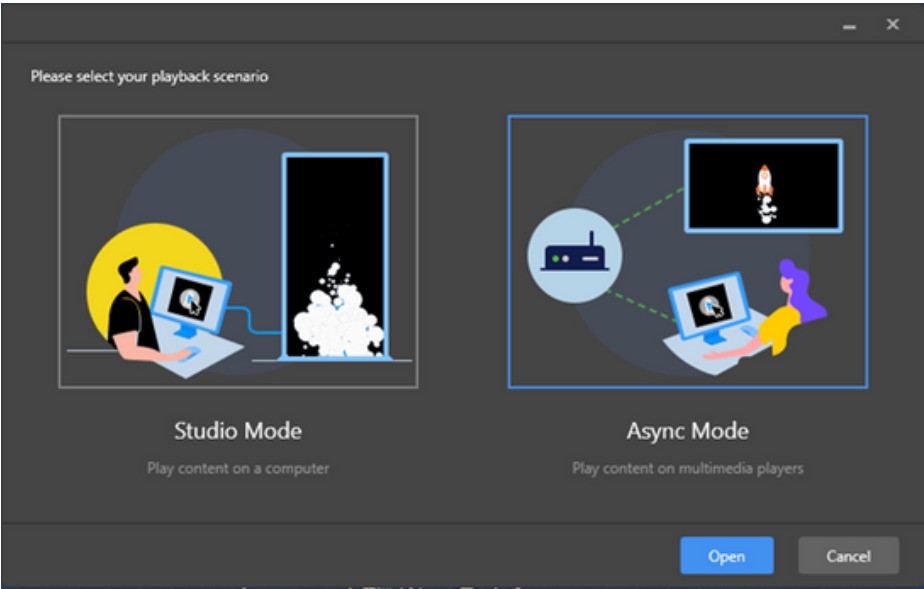
Step 1) Find the USB that came with your Digital Poster Board (DPB) and Download the installation file for ViPlex Express **or** click link below:
<https://novastar.shop/en/downloads/>

Step 2) Click the installation file **ViPlex Express V1.x.x Setup.exe**
You will need administrator credentials to install the program.

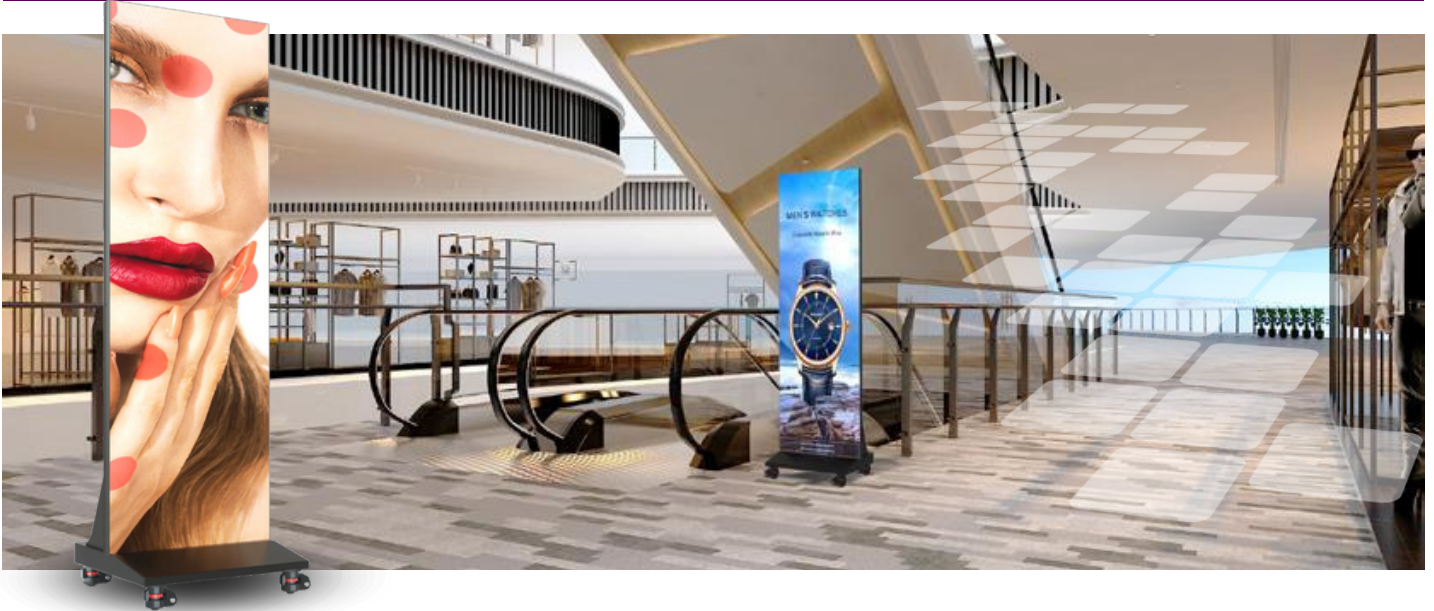
Step 3) Follow the instructions given by the Installation Wizard until the installation is finished.



Figure 3: ViPlex Express
– Home Screen

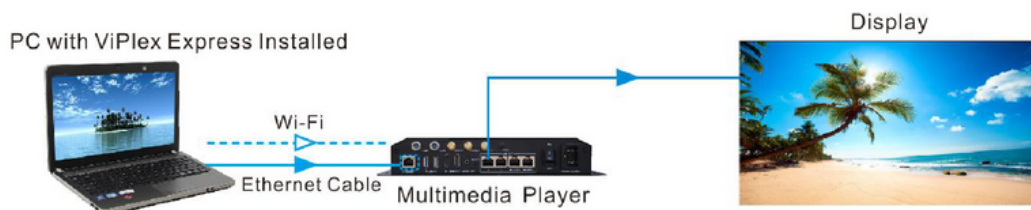


03 CONNECTING LED POSTER



3.1 Connecting via Local Area Network (Ethernet)

Note: You will want to **make note of your serial number of your Digital Poster Board.**



How to do it

Step 1) Right click the ViPlex icon and run the program as administrator.

Step 2) Click on desired Mode to use to panel. (**Note: This document covers Async Mode Configuration.**)



Studio Mode

(Note: Studio is a Direct Connection.)



Async Mode

(Note: Async is through the network.)



Figure 4: ViPlex Express
– Playback Modes

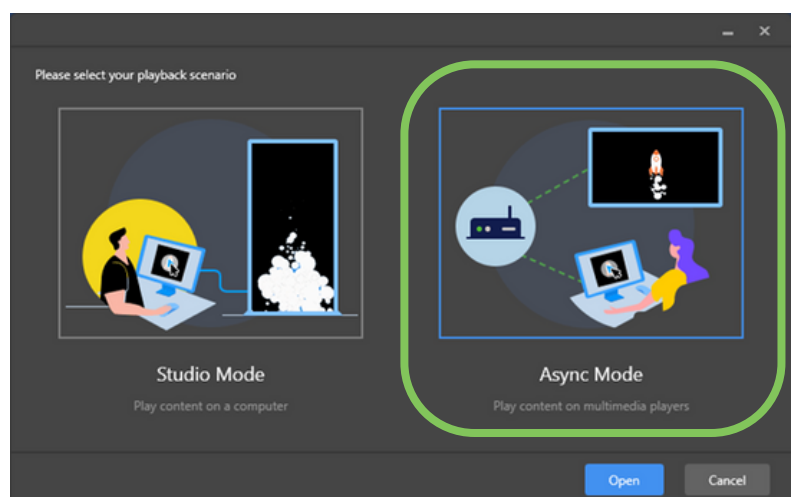
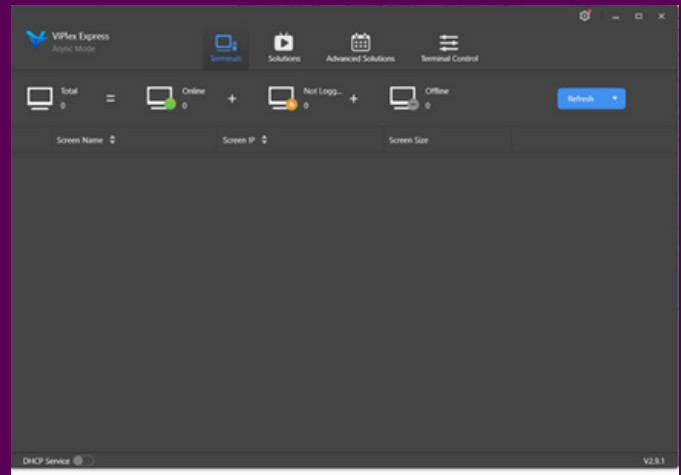




Figure 5: ViPlex Express – Home Screen:
No Connected Device

Step 3) The program should look like **Figure 5** when not connected to a DPB.

(Note: the version in the bottom right corner V2.23.0)



Step 4) Connect the DPB (Digital Poster Board) to the network via an ethernet cable.

(Note: If the DPB is not showing up hit the refresh button at the top of the screen.)

Step 5) Connect your laptop/desktop to the same network as the DPB (Digital Poster Board).

Step 6) Hit the blue **“Refresh”** button on the top right of ViPlex program window.

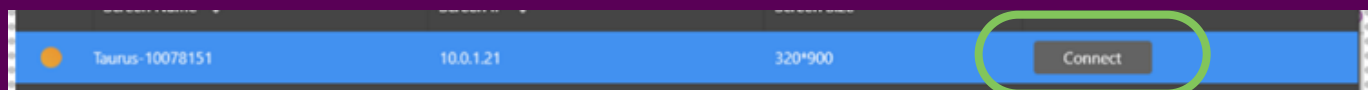
(Note: DPB is DHCP on t on the he **Wired** connection by default.)

- : Denotes that the terminal is online and you can log in to it. Go to **Step 7**.
- : Denotes the terminal is offline and you cannot log in to it.
- : Denotes you have successfully logged into the terminal.

Step 7) Then hit the **“Connect”** button next to the Screen. (See **Figure 6** below)

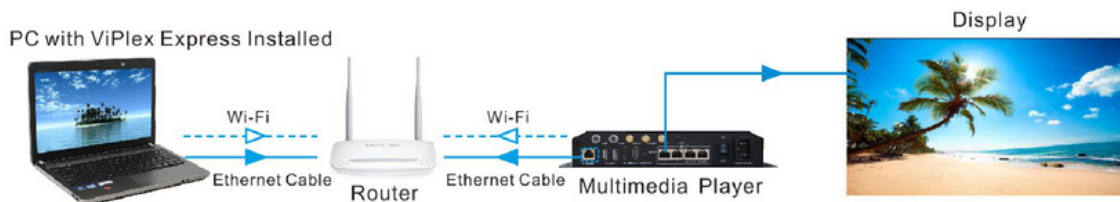


Figure 6: ViPlex Express – Connect to LED Poster “Terminal”



3.2 Connecting via Wireless LAN (WiFi)

Note: You will want to **make note of your serial number of your Digital Poster Board.**



To connect your Digital Poster Board (DPB) to your company **Wireless**, follow the instructions below:

How to do it

Step 1) The DBP is broadcasting out its own WiFi SSID called **"AP+Last 8 digits of the SN"**

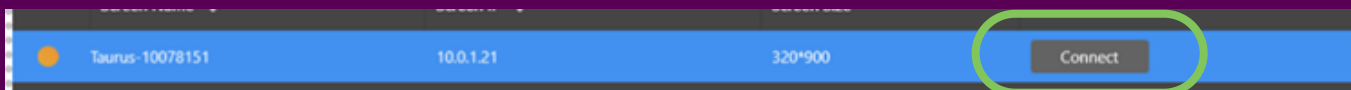
Step 2) You will need to connect your laptop to the WiFi Signal with password **SN2008@+**

Step 3) Once connected, click the blue **"Refresh"** button on the top right of ViPlex program window.

Step 4) Then hit the **"Connect"** button next to the Screen. See [Figure 7](#) below.



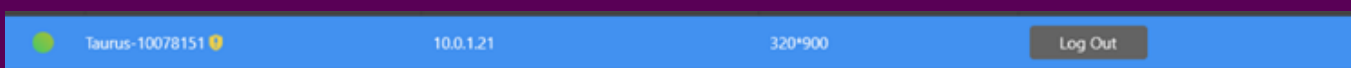
Figure 7: ViPlex Express – Connect to LED Poster "Terminal"



Step 5) After you connected to the DPB, the light on the left will go green and "Log Out" option will show up but **do not click it**. See [Figure 8](#) below.



Figure 8: ViPlex Express – Connected LED Poster "Terminal"



Step 6) Once you're connected, click on the **"Terminal Control"** button. See [Figure 9](#) below.



Figure 9: ViPlex Express – Terminal Control



Step 7) Then click on “**Network configuration**” button to change network settings. See *Figure 10*.



Figure 10: ViPlex Express – Network Configuration

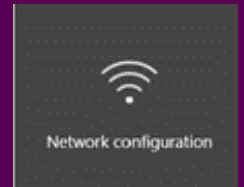


Figure 11: ViPlex Express – Network Configuration Window

Step 8) Either put a static IP address for the Wired connection **or** Click the “**WiFi-Network**” tab. See *Figure 11*.

Note: Write down the existing Wi-Fi Ap Mode **WiFi Network Name & Password**.

Wired network configuration

DHCP ☒ Enable

IP Address 10 . 0 . 1 . 21

Subnet Mask 255 . 255 . 254 . 0

Gateway 10 . 0 . 0 . 1

DNS 10 . 0 . 0 . 11

DNS2

Apply

Step 9) To turn on Wireless, you must check the **Wi-Fi STA Mode**. See *Figure 12* below.

(Note: When turning on Wi-Fi STA, it will automatically turn on the DPS internal Wi-Fi AP)



Figure 12: ViPlex Express – Wi-Fi STA Mode

☐ Wi-Fi AP Mode

☒ Wi-Fi STA Mode



Figure 13: ViPlex Express – Connecting to Wi-Fi STA Mode

Step 10) After Selecting Wi-Fi STA Mode it will prompt you to re-enter the Wi-Fi AP Mode information. See *Figure 13*.

(Note: Please refer to the WiFi Network Name & Password you took down in Step 8.)

Switch to Wi-Fi STA

Prompt: If the terminal is currently connected via Wi-Fi AP, switching to Wi-Fi STA will disconnect the terminal.

Network Name

Password

OK Cancel



Figure 14: ViPlex Express
– Selecting Network

Step 11) After entering the existing Wi-Fi AP Mode information, you will see your options for WiFi. See [Figure 14](#).

(Note: **Double-Click** Wi-Fi name to select.)

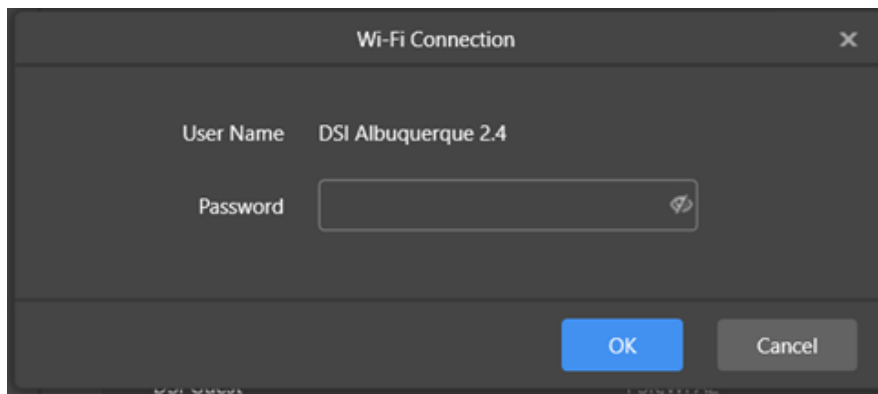
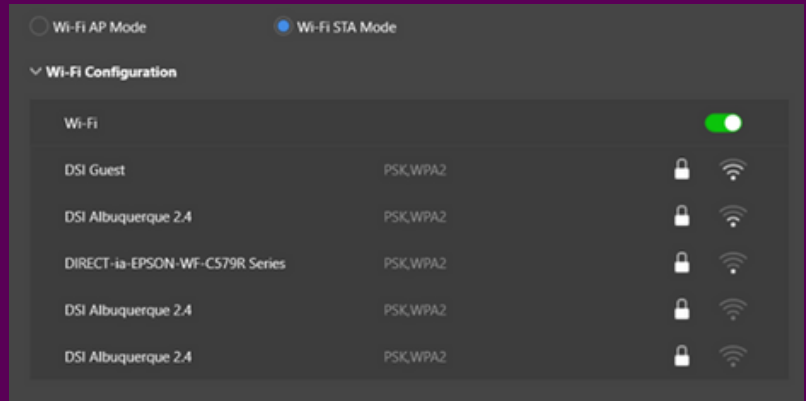


Figure 15: ViPlex Express
– WiFi Sign in

Step 12) When you pick your WiFi SSID it will ask for your password. See [Figure 15](#).

Step 13) After entering the password for the Wireless network and **while Connecting, Unplug the Ethernet Cable from the Panel.**

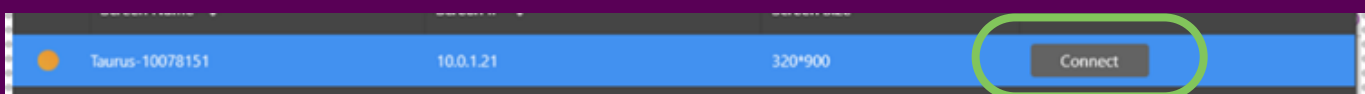
(Note: If the ethernet cable is not unplugged, you may have to restart the process from **Step 10**.)

Step 14) Once the Wired Ethernet Connection has been unplugged go back to the Terminals screen that is showing the panel. (Note: May need to click **Refresh** button to get DBP to show up.)

Step 15) You may have to reconnect after connecting the board to Wi-Fi by clicking the Connect button. See [Figure 16](#) below.



Figure 16: ViPlex Express – WiFi Connect to LED Poster “Terminal”



3.3 Connecting to LED Poster via Poster Hotspot (WiFi AP)

Note: You will want to **make note of your serial number of your Digital Poster Board**.

Your Digital Poster Board (DPB) emits a hotspot signal allowing you to connect to it wherever you are!
Follow the directions below to connect to your DPB via WiFi AP Mode:

How to do it

Step 1) Open the network connection at your PC.

See [Figure 17](#) below.



Figure 17:
PC Network Connection

Note: Located on
toolbar on the bottom
of your Desktop

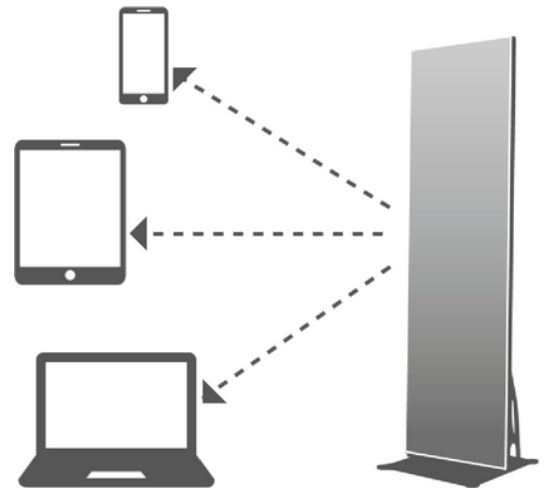
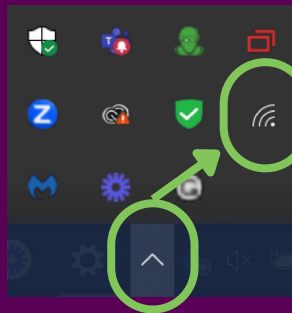


Figure 18: Select Network SSID

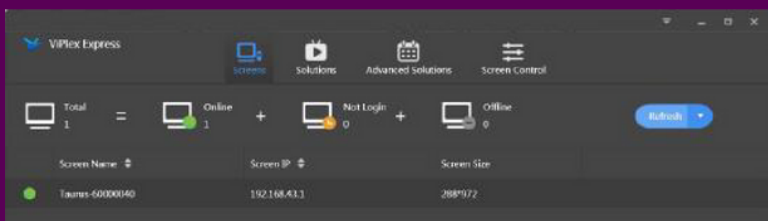
Step 2) Find the Wireless LAN from LED Poster. It will be named: **"AP"+ the last 8 digits of the SN**. See [Figure 18](#).
For example: AP60000040

Step 3) Click the Connect button.

Step 4) Enter the password: **SN2008@+** Click the OK button. Result: If the LED Poster is connected via Wireless LAN with the PC, the software interface shows the following screen –see [Figure 19](#) below.



Figure 19: ViPlex Express – Home Screen
Connected with Wireless LAN




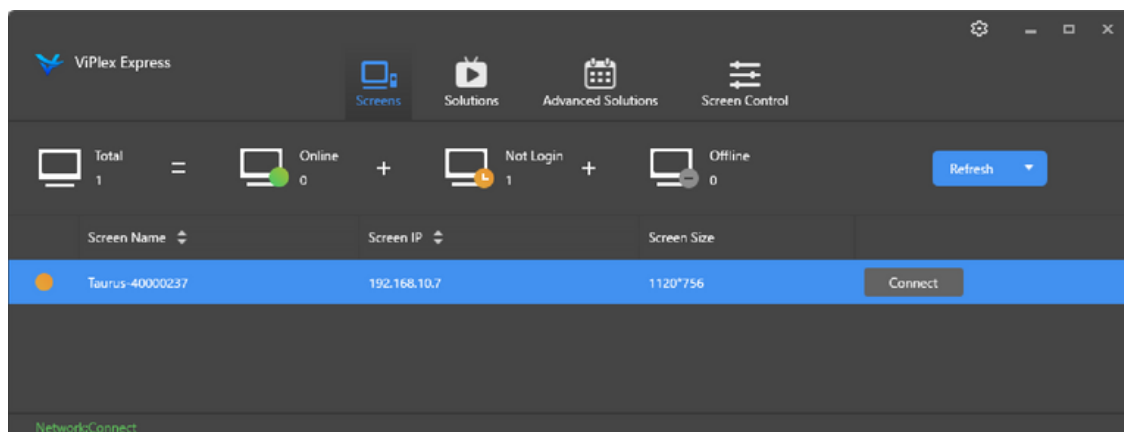
Step 5) The automatic login starts.

Result: If the login is successfully, **YES** is shown and the operation is finished.

If the login fails, **NO** is shown. Go to **Step 6**.

Step 6) Click the **Connect** button next to the screen information. See *Figure 20* below.

 **Figure 20:** ViPlex Express – Home Screen
Login Wireless LAN Connection



Step 7) Enter the user name and the password and click the **OK** button.

04 CREATING SOLUTIONS

For different screens, you can create regular-screen solutions and ultra-long-screen solutions. After updated, the solution data in async mode will be synchronized to studio mode.

4.1 Creating a Regular-Screen Solution

Related Information

- A regular-screen solution contains one or more pages and each page contains one or more media items.
- The pages of a solution are played in order from top to bottom.

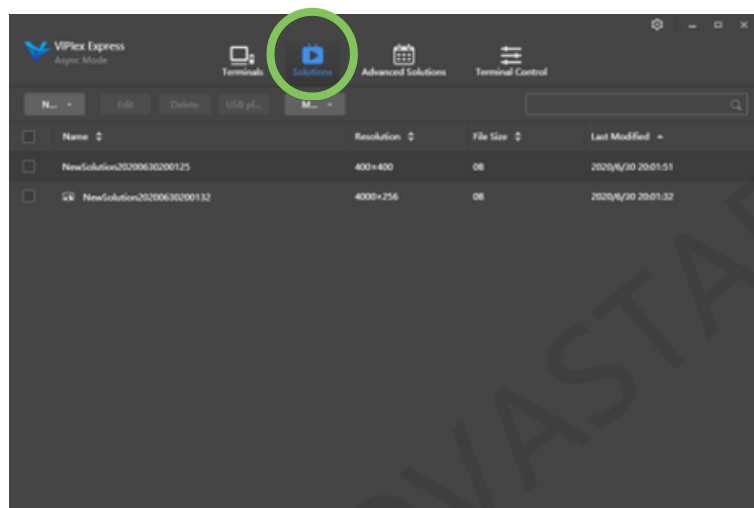
Operating Procedure

- Before you create a solution, get the screen resolution in advance.

*(Note: The Regular Screen resolution for the LED Poster is **320 px x 900 px**)*

Step 1) Choose **Solutions** to access the solution management page. See *Figure 21*.

 **Figure 21:** ViPlex Express – Solution Management



Step 2) Click **New** and select **Regular Screen** from the drop-down menu. The Solution Information dialog box appears. See *Figure 22* below.



Figure 22: ViPlex Express – Solution Information

Solution Information

Solution Name:

Resolution: Width Height

Specify Terminal >

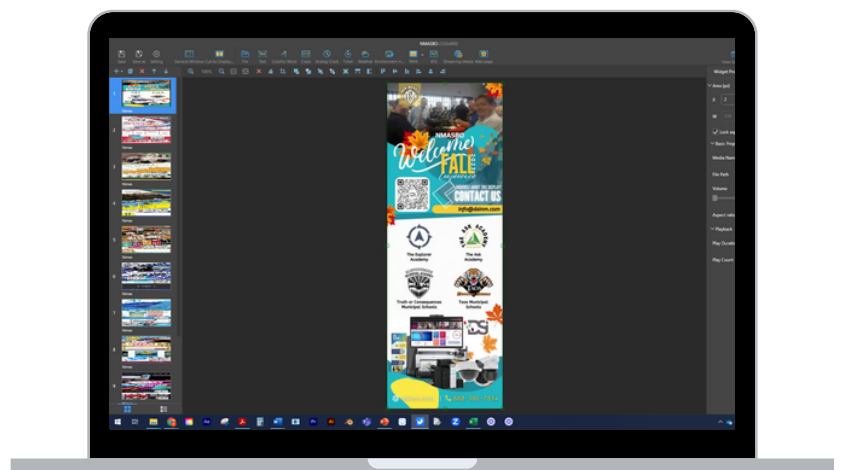
Remarks:

100character(s) remaining

OK Cancel

Step 3) Set a name and resolution for the solution, then click **OK** to access the solution editing page, as shown in *Figure 22* above.

You can also set a resolution by clicking **Specify Terminal** and the resolution will be the same as the resolution of the terminal you select.



05 ADDITIONAL SUPPORT

1 Place Ticket with DSI Security

If you have any questions or need help, please email securitysupport@dsinm.com with your best contact information and a couple options you will be available on your calendar. The next available technician will be notified and get back to you.

2 DSI SUPPORT

Visit our Website Support center at www.dsinm.com/support for your one-stop spot for technical and product support. It brings together hardware, software, and network troubleshooting resources. Access:

- How-to Videos
- Troubleshooting FAQs
- Product Manuals
- Download Drivers/Software and more



CONTACT US



www.dsinm.com



888-386-7834



info@dsinm.com